



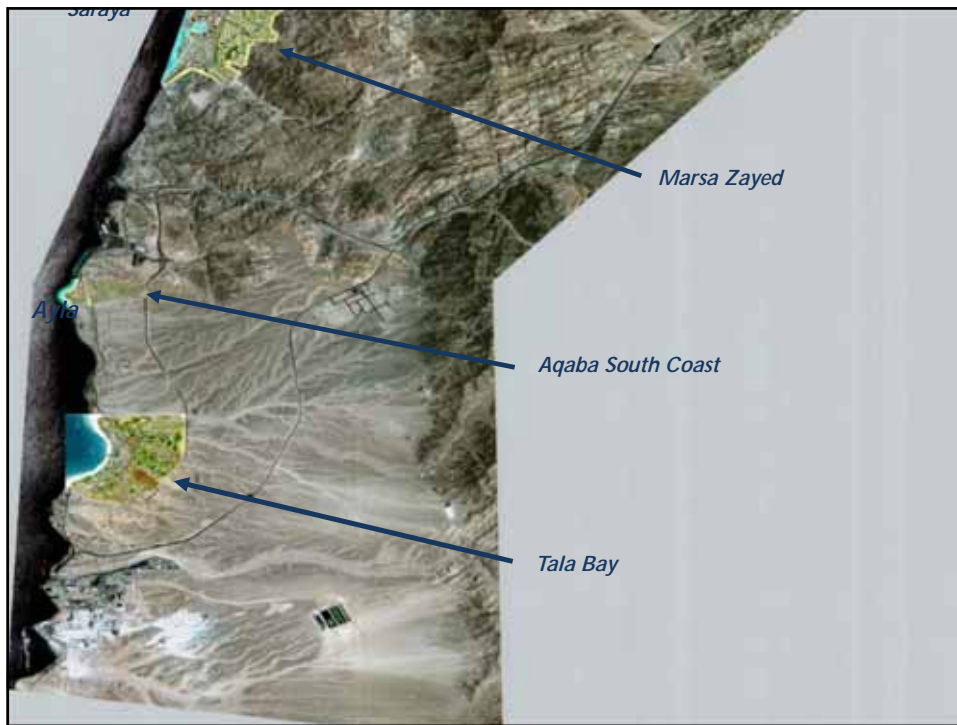
A waterfront haven in Aqaba, featuring up-market hotels, luxury residences, commercial and recreational facilities and Jordan's first 18-hole signature golf course.

**Developer**  
Ayla Oasis Development Co.



**Sponsor**  
Arab Supply & Trading Co.







## Project Location

- Located at the northern tip of the Gulf of Aqaba
- Overall area 432 hectares
- 235m frontage on the Gulf of Aqaba
- Connected to Aqaba Town from the East
- Adjacent to international borders

## Development Program

- 75 hectares of lagoons
- 1,944 hotel rooms
- 4,141 residential units
- 100,000 sqm of retail and commercial
- 2 golf courses (27 holes)
- Recreational amenities

2009



2010



2011



2012



ayla

2013



2014



TODAY



ayla

## Phase One Components

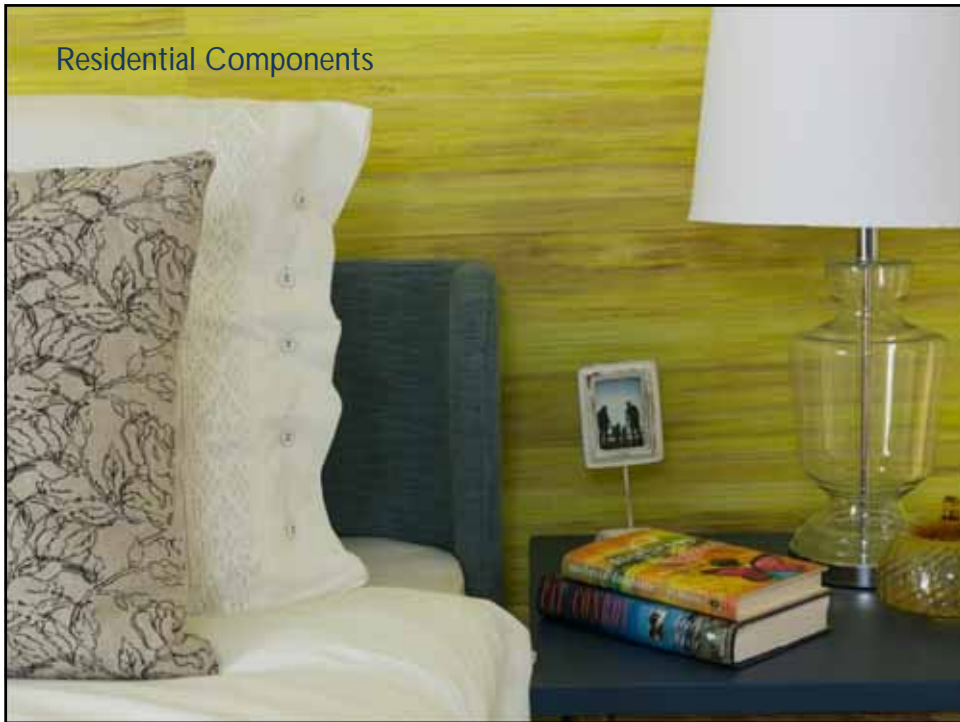


## Phase One Components 2015- 2017

- **Commercial**  
**Marina Village**  
 - Retail/ Souk  
 - Souk Hotel  
 - Hyatt Regency  
 65 outlets & 3 kiosks  
 74 keys  
 286 keys
- **Residential**  
**Peninsula Islands**  
 20 villas  
**Island Apartments**  
 150 units  
**Golf Residences**  
 120 units  
**Souk Apt.**  
 55 units
- **Recreational**  
**Lagoons**  
 750 donums  
**Marina**  
 186 berths  
**Golf course**  
 1,200 donums  
 18 Holes  
 9 Holes  
 - Championship golf course  
 - Golf Academy course  
 - Golf Academy building  
 - Comfort stations  
 - Maintenance building
- Beach clubs**  
 - Beach club – 10  
 - Beach club – B12
- **Utilities**  
 - PV plant # 1  
 3.2 MWp  
 - PV plant # 2  
 2.65 MWp  
 - ICT Project



### Residential Components



### Island Apartments



Island Apartments



Island Apartments

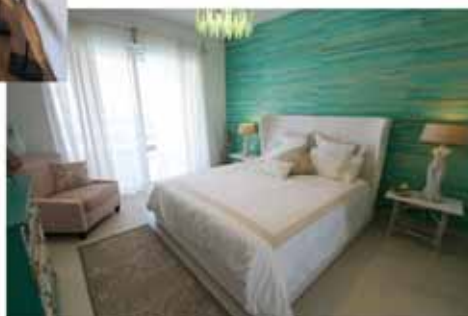


Island Apartments



ayla

Island Apartments



ayla

Island Apartments



ayla

Golf Residences



ayla

Golf Residences



ayla

Peninsula Villas



ayla

Peninsula Villas



Souk Apartments



### Souk Apartments



ayla

### Commercial Components



Marina Village



Souk Area and Hyatt Regency

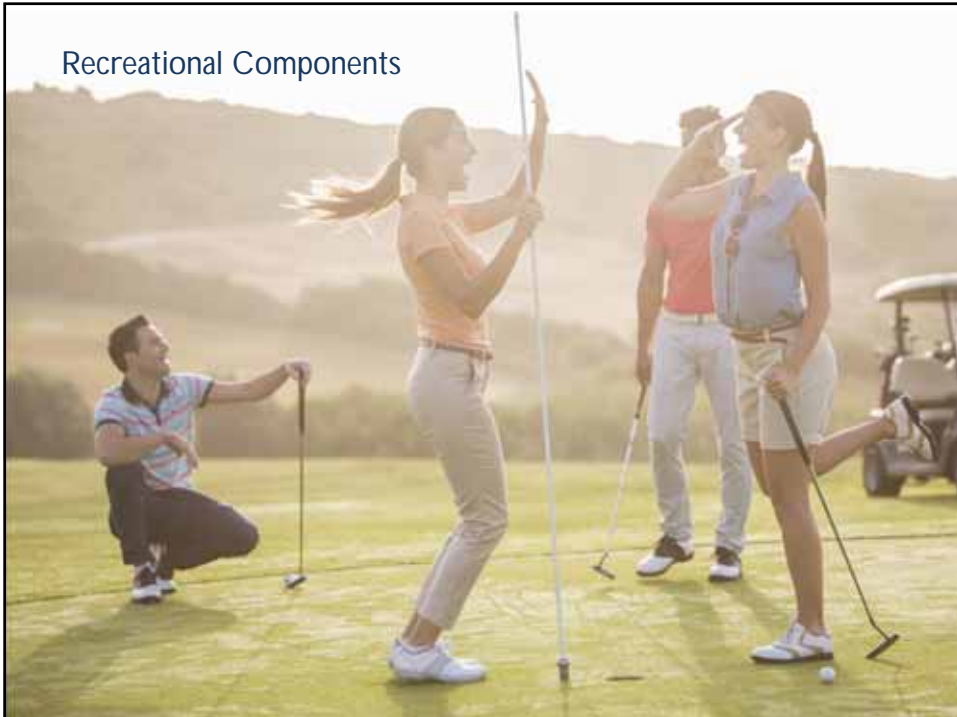


Souk Area



ayla

Recreational Components



The Golf Course



ayla

The Golf Course



ayla

### The Golf Course Comfort Stations & Academy



ayla

### The Beach Club (B12)



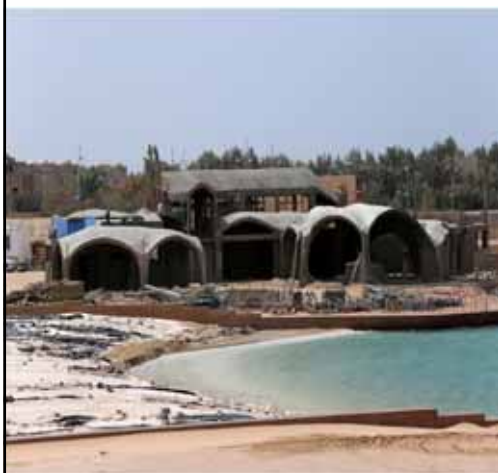
ayla

The Beach Club (B12)



ayla

The Beach Club (10)



ayla

The Marina



ayla

The Dry Stack



ayla

## Utilities

The **Renewable Energy Project** is one of the most important components at Ayla as being sustainable is part of our values and beliefs



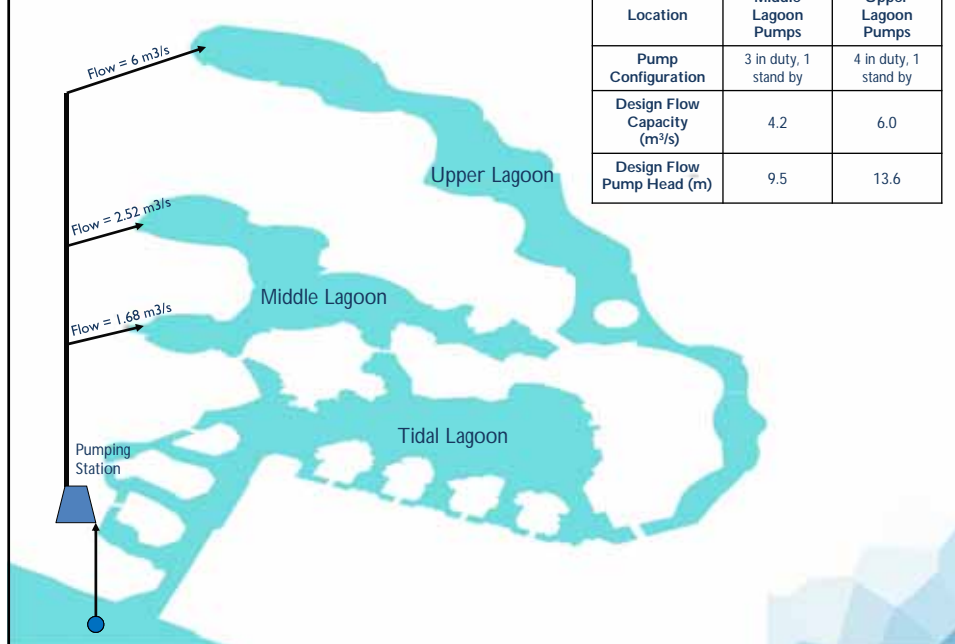
## Photo Voltaic Phase I

PV phase one aims to supply electrical loads to feed Ayla's sea water replenishment system pumping station.

- Generated power 3.2mw
- PV area 32,965 m2
- Yearly generation 5.8 gwh/y
- Yearly consumption 5.9 gwh/y



## Sea Water Replenishment System



## Photo Voltaic Phase II

PV phase two aims to supply electrical loads to feed Ayla's golf course and district cooling

- Generated power 2.65mw
- PV area 28,354 m²
- Yearly generation 4.7 gwh/y
- Yearly consumption 5.8 gwh/y



## Work In Progress

- Awarding Date: July 2013
- Contract Value: 8 Million JD
- Completion Date PH-II : Dec 2015
- Percentage of Completion PH-I: 100 %
- Percentage of Completion PH-II: 85 %
- Payments Up-to-date: 6.79 Million JD
- Phase-I Power Plant was fully connected to the Grid on May 2015 and it is now generating its full capacity
- The SWRS is consuming Green Energy as of 21 May 2015
- The daily production is average of 20,000 kwh/day which represent JD3,600 per day





PV Phase I - Activation Event



ayla

PV Activation Event



ayla



